

premiation.



LONDON

TOP 25 NEW RIVERSIDE DEVELOPMENTS ON THE THAMES



Prime Point



Q2 2026

L&Q

📍 Greenwich

🚶 North Greenwich, 10 minutes

apartments from £410,000

A new development in Zone 2/3, where modern amenities, cultural attractions, and scenic landscapes merge

Project highlights

Located in the Greenwich borough, one of London's greenest districts, this development is just an 11-minute walk from The O2 arena.

Apartments range from studios to 3-bedroom units, with sizes from 421 to 927 sq. ft., all featuring private balconies with views of The O2, the Thames, or Central Park.

Each residence boasts high-quality finishes with built-in Siemens and Bosch kitchen appliances.

Concierge service, a rooftop terrace, landscaped gardens, and a residents' lounge.



premiation.



Viewpoint



completed

Linden Homes

📍 Wandsworth

🚇 Clapham Junction, 10 minutes

apartments from £445,000

A 4-building residential complex, rising from 7 to 17 storeys, just 150 metres from the Thames and York Gardens

Project highlights

Just 10 minutes from Battersea Park, in a lively area centred around Old York Road with trendy restaurants, cafés, and boutiques.

Apartments range from 1- to 3-bedroom, with sizes from 530 to 1,130 sq. ft.

Each home features business-class interiors with modern finishes, built-in wardrobes, and Symphony kitchens.

Landscaped gardens with relaxation areas and underground parking.



premiation.

Royal Arsenal Riverside



Q1 2026

Berkeley Group

📍 Greenwich

🚶 Woolwich, 7 minutes

apartments from £450,000

A large development on 88 acres in Woolwich, occupying a prime location along the River Thames

Project highlights

The development is set in South London, near historic markets and the newly reopened Woolwich Grand Theatre.

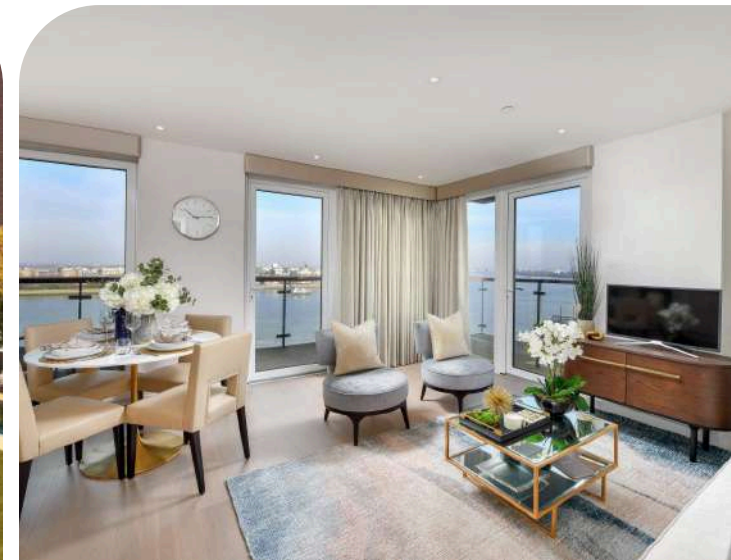
5 residential buildings, landscaped parks, walking trails, a riverside promenade, and a mix of shops, restaurants, and bars.

Apartments range from studios to 3-bedroom units, with sizes from 541 to 1,069 sq. ft.

Each residence offers contemporary finishes and fully integrated kitchens with Bosh or Siemens appliances.

Concierge service, gym, swimming pool, spa, cinema, and the Firepower Royal Artillery Museum.

premiation.



Riverscape



Q1 2025

Ballymore & Oxley International Holdings

📍 Newham

🚶 Custom House, 10 minutes

apartments from £470,000

A new riverfront development in the heart of the Royal Docks, sitting alongside 40-acre neighbourhood at Royal Wharf

Project highlights

Located in a rapidly developing riverside district with picturesque docks and marinas along the Thames.

Apartments range from 1- to 3-bedroom units, with sizes from 536 to 1,214 sq. ft., featuring

All residences feature interiors designed by Amos & Amo and built-in Siemens kitchen appliances.

Gym, yoga studio, 25-metre swimming pool, spa, Sky Lounge on the 16th floor, a pub, landscaped gardens, and a 24-hour concierge and security service.

Additional amenities include the Royal Wharf Primary School, Nest nursery, and a Community Dock for events.

premiation.



Greenwich Peninsula



Q4 2025

Knight Dragon

📍 Greenwich

🚶 North Greenwich, 12 minutes

apartments from £470,000

A mixed-use development featuring 17,000 new homes and a major commercial district spanning 1.6 miles of Thames river frontage

Project highlights

Located in the historic Greenwich area on the southeast bank of the Thames, this development sits within a UNESCO World Heritage Site.

Apartments range from studios to 3-bedroom units and penthouses, with sizes from 409 to 1,758 sq. ft.

Each residence features interiors designed by State Of Craft, Conran + Partners, and Ashby studios.

2 design finishes are available: Light, with a soft colour palette, and Dark, with rich, deep tones. Kitchens are equipped with integrated appliances.

24-hour security and concierge service, gym, spa, swimming pool, library, cinema, and lounge terraces.



premiation.

The HiLight



Q2 2026

Ghelamco Group

📍 Wandsworth

🚶 Clapham Junction, 10 minutes

apartments from £595,000

A 24-storey development by Ghelamco Group in Wandsworth

Project highlights

The development is located in the southwest of London, in Wandsworth, known for its rich cultural life. York Gardens Park is only 3 minutes on foot.

Apartments range from 1- to 3-bedroom units, with sizes from 538 to 1,099 sq. ft.

Each residence features interiors by Bowler James Brindley, smart lighting control, underfloor heating and cooling, and modern kitchen appliances.

A 24-hour concierge service, conference rooms, co-working spaces, fitness centre, club lounge, cinema, rooftop bar, sports court, observation deck, and roof-top garden.



premiation.

Landmark Pinnacle



completed

Chalegrove Properties Ltd

📍 Tower Hamlets

🚶 Canary Wharf, 7 minutes

apartments from £615,000

A 75-storey tower in London, located by the South Dock canal and the River Thames

Project highlights

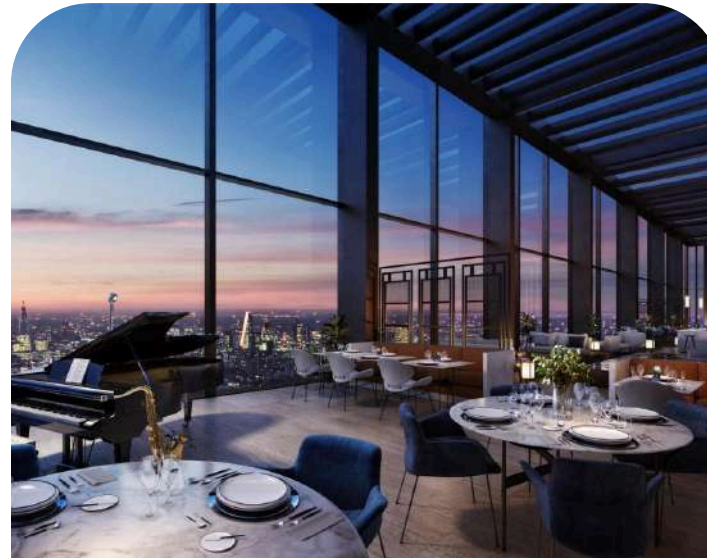
The development is located in a 7-minute walk to Canary Wharf station with London City Airport in a 15-minute drive.

Apartments range from studios to 2-3 bedroom apartments with sizes from 426 to 1,173 sq. ft.

All the residences come with interiors by Squire and Partners, featuring integrated Siemens appliances.

The tower is surrounded by a landscaped park with rooftop terraces.

Gym, lounge with a library and dining space for 12, a private cinema, game room, golf simulator and conference rooms.



premiation.

One Thames Quay



completed

Chalegrove Properties Ltd

📍 Tower Hamlets

🚶 Canary Wharf, 12 minutes

apartments from £635,000

A collection of stylish apartments with sweeping panoramic views of Canary Wharf, the River Thames and beyond

Project highlights

Located in Tower Hamlets, home to the iconic Tower Bridge, this development offers fantastic transport links and is just moments from the vibrant Canary Wharf and Greenwich.

Apartments range from 1- to 3-bedroom units, with sizes from 633 to 1,131 sq. ft.

Each residence features modern finishes and Siemens integrated kitchen appliances.

Every apartment boasts access to a private outdoor balcony.

The Residents' Club, concierge, a cinema, a 46th floor lounge and the on-site gym.



premiation.

Teddington Riverside



completed

City Developments Limited

📍 Richmond upon Thames

properties from £640,000

A collection of apartments, townhouses and a mansion in private riverside gardens

Project highlights

The complex is located in southwest London, just 12 miles from the city centre and 6 minutes from Teddington railway station, set in the protected Teddington Lock area.

Apartments range from 1- to 3-bedroom units, with sizes from 549 to 1,841 sq. ft., as well as 4-bedroom townhouses with views of the Teddington Lock.

Each residence features modern finishes with underfloor heating and Siemens kitchen appliances.

24-hour concierge service, bike storage, electric vehicle charging points, secure gated access with CCTV, children's play areas, landscaped gardens.



premiation.

Hurlingham Waterfront



Q3 2025

🚶 Parsons Green, 11 minutes

📍 Hammersmith and Fulham

Rockwell

apartments from £640,000

A collection of 220 apartments on the northern bank of the Thames

Project highlights

The development is located in the southwest of London, within the royal borough of Hammersmith and Fulham.

Apartments range from studios to 4-bedroom units, including a panoramic penthouse, with sizes from 468 to 1,910 sq. ft.

Each residence features finishes in 2 styles and colour palettes: the "Classic" and the bespoke "Prime" by FLINT Design Studio. Kitchens are equipped with Siemens appliances in the Classic apartments and Miele or equivalent in the Prime apartments.

A private garden, spa complex, 19-metre swimming pool, sauna, steam room, fitness centre, lounge, cinema, business centre with meeting rooms, grooming salon, bike storage, and 24-hour concierge service.

premiation.



Riverside Quarter



completed

Frasers Property

📍 Wandsworth

🚶 Wandsworth Town, 12 minutes

apartments from £650,000

A new riverside development near Wandsworth Park and the ferry pier

Project highlights

The development is located in a 7-minute walk to Canary Wharf station with London City Airport in a 15-minute drive.

Apartments range from studios to 2-3 bedroom apartments with sizes from 426 to 1,173 sq. ft.

All the residences come with interiors by Squire and Partners, featuring integrated Siemens appliances.

The tower is surrounded by a landscaped park with rooftop terraces.

Gym, lounge with a library and dining space for 12, a private cinema, game room, golf simulator and conference rooms.



premiation.

Embassy Gardens



completed

EcoWorld and Ballymore

📍 Wandsworth

🕒 Nine Elms, 5 minutes

apartments from £670,000

A mixed-use development, featuring luxury apartments and commercial units by HAL Architects

Project highlights

The development is set on the 2nd line from the Thames, opposite the US Embassy, just a 15-minute walk from Vauxhall Park and The Oval cricket ground.

Apartments range from studios to 3-bedroom units, with sizes from 415 to 1,206 sq. ft.

Each residence features high-quality finishes and integrated kitchen appliances.

A rooftop bar, fitness centre, spa, business centre, library, lounge, cinema, café, and a sky pool with a rooftop terrace, all surrounded by a landscaped park.

premiation.



No. 8 Harbord Square



completed

Canary Wharf Group

📍 Tower Hamlets

🚇 Canary Wharf, 5 minutes

apartments from £690,000

A 12-storey residential building in New York loft style, featuring a rooftop garden and 82 loft apartments

Project highlights

The complex is just 11 minutes on the Jubilee Line to Westminster and 15 minutes to Bond Street, with an 11-minute DLR journey to the City business hub.

All apartments feature open-plan layouts with sizes from 800 to 1 431 sq. ft.

Each residence offers high-quality finishes, built-in kitchen appliances, and thoughtfully designed living spaces by Monologue and Naumov studio with 2 layout options

Landscaped garden with greenery, commercial spaces on the ground floor for eco-food stores, cafés, patisseries, and dining spots.

premiation.



Chelsea Riverview



Q1 2025

🚶 Imperial Wharf, 8 minutes

📍 Hammersmith and Fulham

Chalegrove Properties Ltd

apartments from £700,000

A 10-storey waterfront development with 110 apartments, offering panoramic views of the Thames and surrounding areas

Project highlights

The development is located on the scenic banks of the Thames in Fulham.

Apartments range from studios to 3-bedroom units, with sizes from 622 to 1,777 sq. ft.

Each residence features contemporary finishes by AFK designers, built-in Siemens kitchen appliances, and Villeroy & Boch bathroom fittings.

Concierge service, a resident's lounge, private cinema, gym with Peloton bikes, yoga studio, pet room, and a bike storage.



premiation.

Battersea Power Station



completed

SP Setia

📍 Wandsworth

🚇 Battersea Park Station, 10 minutes

apartments from £765,000

A new residential quarter on the site of Battersea Power Station, just steps from the Thames and Battersea Park

Project highlights

The development is located on the riverfront of the Thames, just a 5-minute walk from Battersea Park

The quarter comprises a total of 865 apartments and penthouses, ranging from 393 to 4,744 sq. ft.

Each apartment is finished and includes either a winter garden or terrace, with 2 design palettes available for selection.

membership to the Riverhouse club, which features a bar, restaurant, cinema, and game rooms. Battersea Roof Gardens offer landscaped sky gardens.



premiation.



Goodluck Hope



completed

Ballymore

📍 Tower Hamlets

🚶 East India, 15 minutes

🚶 Canning Town, 15 minutes

apartments from £1,045,000

A collection of 804 apartments on Limmo Peninsula, boasting panoramic views of the River Thames

Project highlights

Located near Leamouth Peninsula in the Tower Hamlets area.

Apartments range from studios to penthouses, with sizes from 400 to 1,841 sq. ft. and feature panoramic windows, balconies, and winter gardens.

Each residence showcases designer finishes by Benningen Lloyd in a loft style, with integrated Siemens kitchen appliances.

Club 1595, a swimming pool, sauna, gym, café, garden, coworking spaces, and cinema.



premiation.

Chelsea Waterfront



completed

🚶 Imperial Wharf, 5 minutes

📍 Hammersmith and Fulham

CK Asset Holdings

apartments from £1,070,000

A collection of 706 apartments in West London by Farrells, offering views over the Thames

Project highlights

Located on the site of a historic power station, just 300 metres from Imperial Wharf station, 5 minutes from Imperial Wharf tube, and 15 minutes from Stamford Bridge Stadium.

Apartments range from 1- to 4-bedroom units and penthouses, with sizes from 560 to 4,787 sq. ft.

Each residence features premium finishes, with panoramic 360° views from upper-floor apartments and penthouses.

All units are equipped with smart home systems, and many include balconies and terraces. Kitchens are designed by Farrell, with Gaggenau appliances and Capel wine fridges.

A fitness centre with a swimming pool, spa, sauna, jacuzzi, Harrods International concierge service, landscaped gardens, boutiques, and a riverside restaurant.

premiation.



River Park Tower



completed

R&F Group

📍 Wandsworth

🚶 Vauxhall, 7 minutes

apartments from £1,091,000

**One of the tallest residential towers in London,
with access to 227 hectares of parkland**

Project highlights

The development is located in the London Borough of Wandsworth, just a 7-minute walk from Vauxhall Park, a historic green space dating back to the Victorian era.

Apartments range from 1- to 3-bedroom units, with sizes from 622 to 2,033 sq. ft.

Each residence features contemporary finishes, light-toned interiors, panoramic windows, built-in Miele and Siemens kitchen appliances, and marble-tiled bathrooms.

A fitness centre, business lounge, game room, and a rooftop terrace on the 56th floor.



premiation.

Chelsea Island



completed

🚶 Imperial Wharf, 3 minutes

📍 Hammersmith and Fulham

Hadley Property Group

apartments from £1,150,000

A collection of 89 apartments offering views of the waterfront along Lots Road, Chelsea Creek, and the Thames

Project highlights

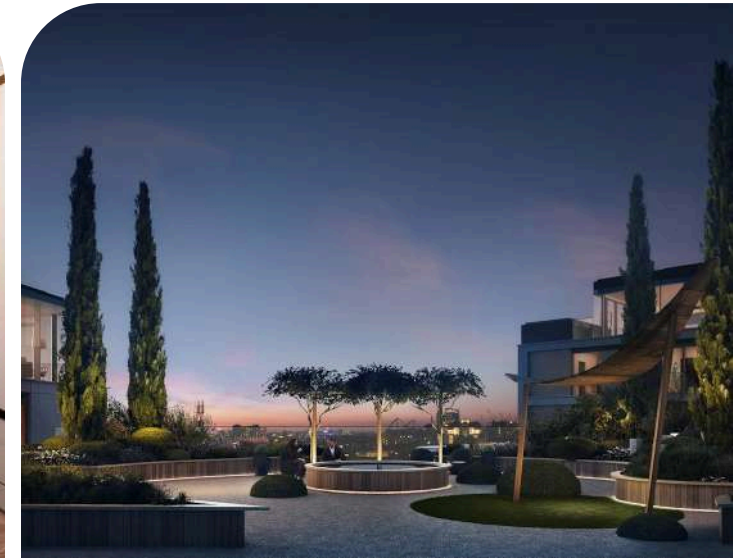
Located close to the riverside Imperial Park and just 200 metres from Chelsea Harbour Pier.

Apartments range from 1- to 4-bedroom units and penthouses, with sizes from 726 to 2,146 sq. ft.

Each residence features light-toned finishes, contemporary design, and built-in Gaggenau kitchen appliances.

A 24-hour concierge service, round-the-clock fitness centre, a rooftop garden on the 6th floor designed by Neill Strain, and a newly-designed public plaza adjacent to Chelsea Creek.

premiation.



Fulham Reach



Q2 2026

🚶 Hammersmith, 2 minutes

📍 Hammersmith and Fulham

Berkeley Group

apartments from £1,375,000

A riverside development with apartments boasting views of Hammersmith Bridge

Project highlights

Fulham Reach is located with excellent connections to major roads and public transport links, and is surrounded by landscaped gardens and riverside walking paths.

Apartments range from studios to 3-bedroom units, with sizes from 452 to 1,435 sq. ft.

Each residence features Villeroy & Boch bathroom fittings and built-in kitchen appliances.

Spa, swimming pool, gym, cinema, lounge area, private garden with a children's play area and relaxation zones, and concierge service.



premiation.

The Cheyne Residences



completed Bmor & Thirdi

City of Westminster Clapham Junction, 11 minutes

apartments from £1,375,000

A boutique development of 23 apartments and 2 penthouses in the neighbourhood of Marylebone

Project highlights

The development is a 10-minute walk from Hyde Park, located in the lively Marylebone area.

Apartments range from studios to three-bedroom units, with sizes from 628 to 2,119 sq. ft.

All apartments feature interiors designed by MSMR & Hudson and Mercer, with modern finishes.

Concierge service, fitness club, bicycle parking, and optional membership to the spa and pool at the nearby Marriott Hotel.



premiation.

Chelsea Creek



Q2 2025

📍 Hammersmith and Fulham

🚶 Imperial Wharf, 3 minutes

Berkeley Group

apartments from £1,570,000

A collection of luxurious canalside homes with landscaped gardens

Project highlights

The development is located just moments from Chelsea Harbour and the River Thames, offering a prime central location.

Apartments, including studios, 3-bedroom units, and penthouses with terraces, range from 474 to 2,777 sq. ft.

Each residence features contemporary finishes in 2 colour schemes, private balconies or terraces, built-in Siemens kitchen appliances, and Villeroy & Boch bathtubs.

Private fitness club, spa, 24-hour concierge service, underground parking, and landscaped gardens.



premiation.

Westminster Tower



Q4 2027

London Square

📍 Lambeth

🚶 Vauxhall, 15 minutes

🚶 Lambeth North, 15 minutes

apartments from £1,700,000

A riverfront collection of 28 luxury apartments on the Albert Embankment

Project highlights

The development is located in the London Borough of Lambeth. Set on the Thames waterfront, it offers direct views of Westminster Abbey.

Apartments range from 1- to 3-bedroom units, with sizes from 1,305 to 2,071 sq. ft.

Each residence features tailored interiors in a choice of light or dark palettes, wood flooring, panoramic windows, and built-in Miele appliances.

24-hour concierge, tower lobby, reading room, private meeting rooms, fitness suite, screening room, and residents' lounge.



premiation.



Triptych



completed

Sons&Co

📍 Southwark

🚶 Southwark, 11 minutes

apartments from £1,735,500

A 2-building complex featuring a 65-storey residential tower with 496 apartments and a 20-storey, 4-star hotel

Project highlights

The complex is located in London's financial district, 5 minutes from Jubilee Park and Canary Wharf Shopping Centre, surrounded by restaurants and waterfront pedestrian areas.

Apartments range from studios to three-bedroom units, with sizes from 430 to 1,172 sq. ft.

Each residence features designer finishes, built-in Siemens kitchen appliances, underfloor heating, and panoramic windows.

24-hour security and concierge service, fitness center, spa, swimming pool, sauna, lounge area, wine cellar, business spaces, cinema, game room, children's play area, and a rooftop bar.



premiation.

Thames City



Q2 2025

R&F Group

C C Land

📍 Wandsworth

🚶 Vauxhall, 4 minutes

apartments from £3,886,000

A waterfront mixed-use development with 1,900 apartments in Central London

Project highlights

The development is set on the former northern site of New Covent Garden Flower Market, offering views of the River Thames.

Apartments range from 1- to 3-bedroom units, with sizes from 603 to 3,059 sq. ft.

Each residence features premium finishes by Skidmore, Owings & Merrill, kitchens with Miele, Siemens, and Gaggenau appliances, and marble bathrooms with Duravit fittings.

A swimming pool, fitness centre, wellness spa, private cinema, dining room, business centre, landscaped park, and a 24-hour concierge service.



premiation.